

HOOK & LOOP COLOR CHART



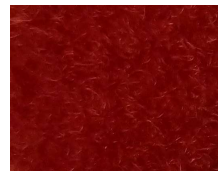
#1 White



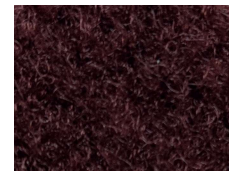
#2 Beige
PMS 467U



#3 Yellow
PMS 109U



#4 Red
PMS 186C



#5 Burgundy
PMS 195C



#6 Green
PMS 336C



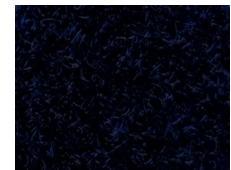
#7 Olive Green
PMS 574U



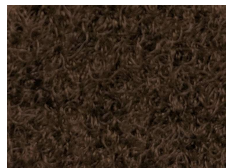
#8 Light Blue
PMS 628U



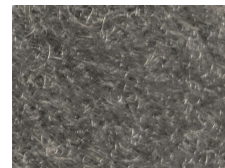
#9 Royal Blue
PMS 287C



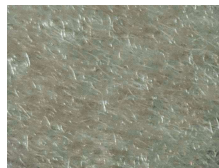
#10 Navy Blue
PMS 2768C



#11 Brown
PMS 175U



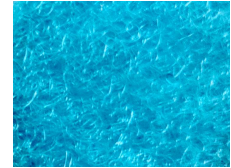
#12 Grey
PMS 424C



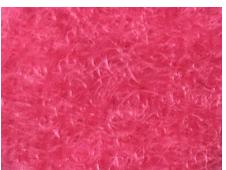
#13 Smoke Grey
PMS 400U



#14 Black



#15 Turquoise
PMS 3125C



#16 Hot Pink
PMS 213C



#17 Ivory
PMS 4545U



#18 Sky Blue
PMS 291C



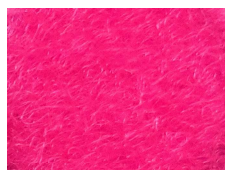
#19 Neon Orange
PMS 811C2X



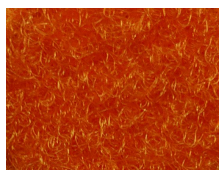
#20 Neon Green
PMS 802U



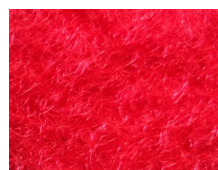
#21 Neon Yellow
PMS 13-0630TN



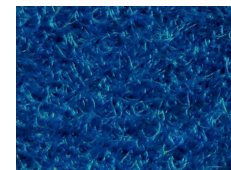
#22 Neon Pink
PMS 806C



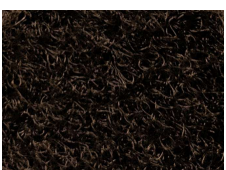
#23 Orange
PMS 172C



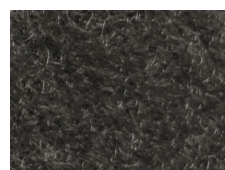
#24 Neon Red
PMS 812 2CX



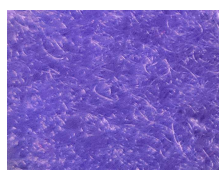
#25 Neon Blue
PMS 641C



#26 Dark Brown
PMS 4400C



#27 Dark Grey
PMS 426U



#28 Purple
PMS 2655C



#29 Pink
PMS 1895U



#30 Juice
PMS 1485C

COLOR DISCLAIMER: Due to variations in computer monitor displays, internet browsers and user settings, the color samples above may appear differently among different viewers. It is not possible to guarantee that our color chart will look the same on all computers, thus we do not guarantee that what you see above accurately portrays the true color of the hook and loop tape that we stock. The Pantone Matching System (PMS) numbers provided indicate Pantone colors that closely resemble our own colors. We do our very best to ensure our color chart is as close to the exact product as possible, but if it is crucial that the colors be exact, it is highly recommended that you order a sample first before placing a full order. Please also note that minimal color variation may exist between different dye lots, and between the hook side and loop side of the same fastener tape.